



Fun Fold Card with 6 x 6 Paper Project Sheet



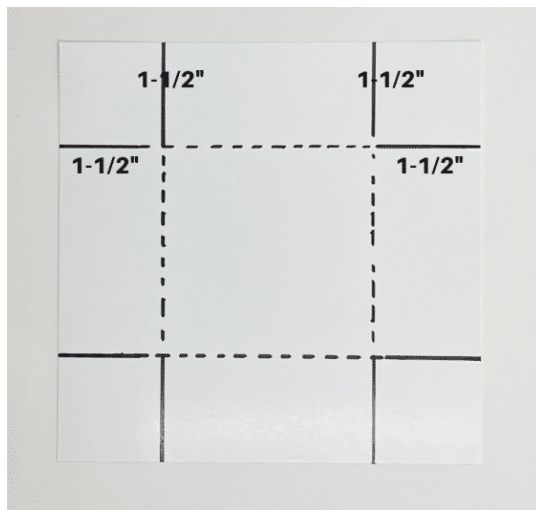


Measurements:

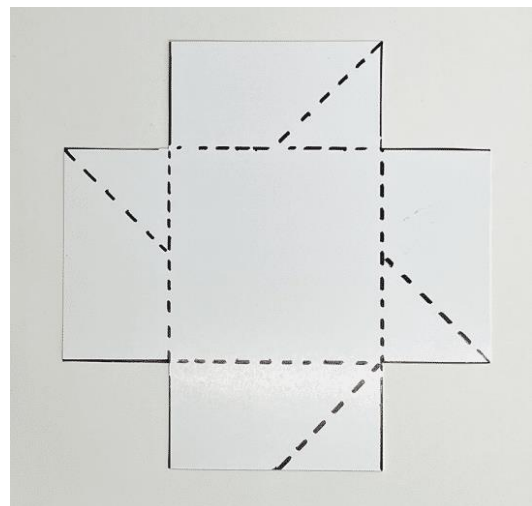


These are the templates to use with the 6" x 6" Designer Series Paper:

Score @ 1-1/2" along each of the four sides.



Cut out the four corner squares and fold along the fold lines.





After cutting out the four corner squares, the 6" x 6" piece of Designer Series Paper will look like this.



Fold each of the four edges to meet the score line like this.



Fold each toward the center.



Tuck the last corner in just like closing a box.

Add a 2-3/4" square to the inside if desired.








 karentitus.com  stampingonthebackporch@gmail.com

For more instructions, check out my video on YouTube:

<https://www.youtube.com/watch?v=3Mpy8kTG1DA>

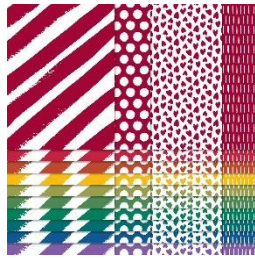
Join our community!

-  <https://www.facebook.com/Stampingonthebackporch/>
-  <https://www.instagram.com/stampingonthebackporch/>
-  <https://www.youtube.com/user/stampingonthebp>

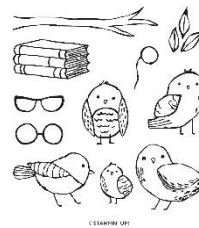
Supply List:



Hey Chuck
[161549](#)



Regals
[161642](#)



Bird's Eye View
[161436](#)



Countryside Inn
[161467](#)



Zoo Crew
[161304](#)



Fresh as a Daisy
[161289](#)

[Click here to shop my online store!](#)